



ICAP/4 Version 8.x.11 Build 3435

One Civic Plaza Dr., Suite 470
Carson, CA 90745-7962 USA
Tel: (310) 952-0657
Fax: (310) 952-5468
Info@intusoft.com

Compatible with all 32bit and 64bit Windows including Vista!



Check www.intusoft.com for software updates!

Web Download Option:

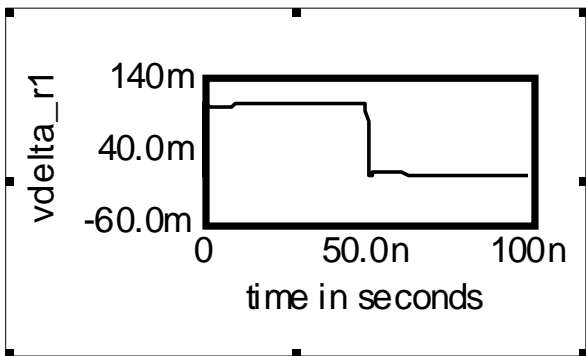
If you are currently on maintenance, you can also obtain this update via the web. Simply go to <http://www.intusoft.com/support.htm> and enter your serial number to obtain this update. Your serial number is on the "Installation Letter" that came with your initial purchase. You can also find your serial number from the Help pulldown, "About SpiceNet," then the "User Tab" dialog within the Schematic program. (Note that the ICAP/4 Consumer package does not offer maintenance.) Should you have any questions about the status of your maintenance program, please contact Intusoft at (310) 952-0657.

New Features and Enhancements

Note: Product features below are not necessarily available on all ICAP/4 software packages. For a more detailed list go to: <http://www.intusoft.com/products/icapscomparison.html>

DSP Designer: A new "DSP Designer" product has been added to several higher-end packages. DSP Designer uses the ICAP/4 tool suite to make an integrated simulation/DSP workbench. Digital control algorithms can be simulated using special device models to create Z transformations and corresponding DSP programming instructions, including hidden parameters not accessible within usual DSP development. Results are viewed as waveforms and Bode plots, enabling the designer to develop a visual correlation of the DSP's micro-code and design performance with what will be programmed into an actual DSP development board. Other aspects of DSP can also be simulated such as digital and analog signal conversions, sample/hold, filtering and load. An oscilloscope plug-in is available for viewing lab oscilloscope waveforms in IntuScope, alongside simulated ones.

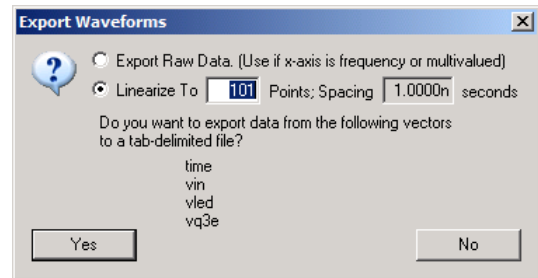
Differential Voltage Cross-probing: The voltage difference across a two-pin device can be plotted by cross-probing it with the <Ctrl> key held down. The <ctrl> and <shift> keys are held down to display results on the schematic. Also, the <ctrl> key can be held down, then click on a node and a delta symbol will appear next to the cross-probe cursor. Click on another node to obtain the voltage difference between those two nodes. Repetitive cross-probing of differential signals is not directly allowed, though updating their previously probed signals in IntuScope is done using the <Ctrl> <U> keys.



New IntuScope Scripts: These scripts automatically display several electrical measurements for an entire curve family such as min/max, rise/fall, standard deviation, 3-sigma_mean and more, obtained from a new "Multi" menu from the Calculator pulldown.

Hide IntuScope ID Legend: IntuScope's "Trace ID Legend" can optionally be hidden when more room is required for clearer viewing of lots of traces.

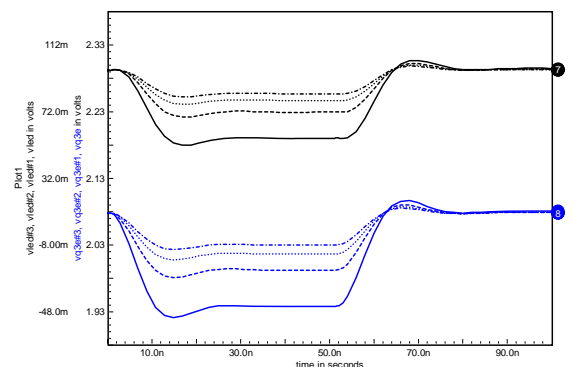
Linearize IntuScope Exported Waveform Data: In IntuScope you can now export linearized waveform data to a text file. To select a group of waveforms, hold down the <shift> key while clicking on each vector name in the ID legend.



IntuScope Print Single-Element Vectors: Single-element waveform vectors can now be viewed in IntuScope's Add Waveforms dialog, and can be selected to display their values in the Output window. Valuable for analyses such as OP and noise.

IntuScope Update Document Enhanced: The updated waveforms for IntuScope's "update current document" or "add updated document" will now maintain the same trace colors and styles as the initial waveform set.

IntuScope Add Updated Traces Enhanced: In IntuScope if you start with solid line waveforms and use the "add updated traces" function, then each updated set of waveforms will keep the same color as the initial waveform set, but will cycle through the different styles of dashes & dots.



Evaluate Functions in .PARAM Statements: The following functions were added to the .PARAM parser in ICAP/4. SINC, PWR, PWRS, MAX, MIN, ATAN2, STP, URAMP

Keep your Maintenance Current to Receive Tech Support and the Next ICAP/4 Release!